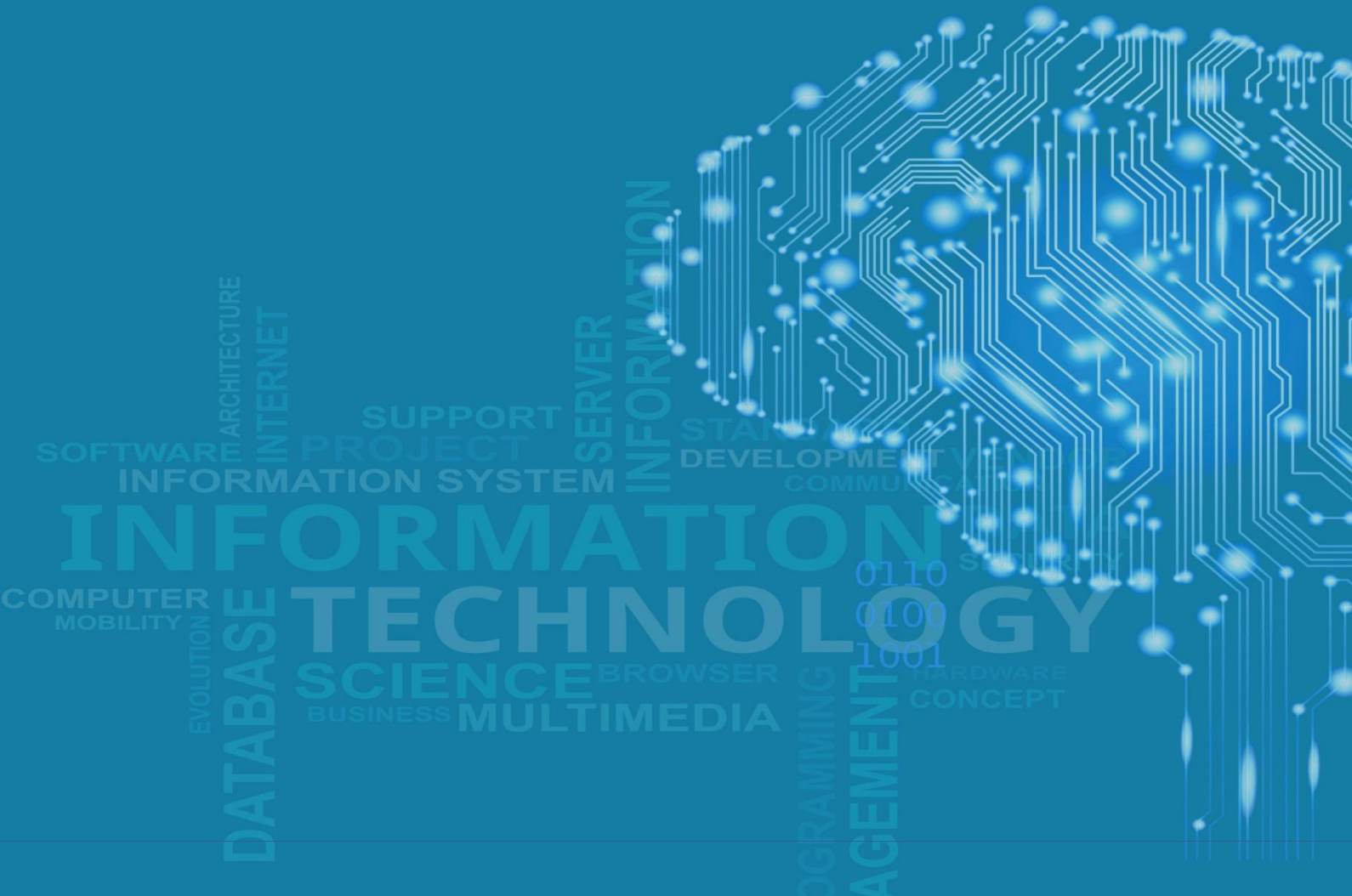




IT M.Sc. STUDENT GUIDE

ACADEMIC YEAR 1436- 2015



Contents

PREFACE.....	3
A BIT OF IT	4
IT IS MORE THAN EDUCATION	4
WHAT IS INFORMATION TECHNOLOGY?	4
VISION.....	4
MISSION.....	4
STUDY PLAN	5
THESIS OPTION	5
PROJECT OPTION.....	5
COURSES	6
CORE COURSES.....	6
Master’s Thesis and Project.....	6
ELECTIVE COURSES	7
ACADEMIC AFFAIRS	8
KSU REGISTRATION SYSTEM (EDUGATE).....	9
ACADEMIC ADVISING	9
OVERRIDING REGISTRATION.....	10
YOUR VOICE HEARD	11
IT DEPARTMENT Head	11
DEAN OF SCIENTIFIC AND MEDICAL STUDIES	11
RECTOR BRANCH OFFICE FOR FEMALE AFFAIRS.....	11
STUDENTS RIGHTS PROTECTION UNIT.....	12
IMPORTANT TO KNOW	13
GATES AND CAMPUS EXIT POLICIES	13
STUDENT ACTIVITY CENTER.....	13
BANKING SERVICES	13
WIRELESS NETWORK.....	13
DEANSHIP OF SKILLS DEVELOPMENT.....	14
DISCOUNTED AIRFARE	14
TRAVEL	15
ACADEMIC POLICES	16
ATTENDANCE	16
IMPORTANT LINKS.....	17

PREFACE

Dear Students,

On behalf of the faculty and staff in the Information Technology Department, I extend a warm welcome to all our new students at the College of Computer and Information Sciences at King Saud University (KSU). Information Technology is a fascinating discipline which now impacts nearly our everyday life. We interact with technology through mobile phones, cameras, cars, planes as well as devices used in banking, medicine, security, entertainment and many other aspects of life.

The Information Technology Department is committed to provide a supportive, friendly and challenging learning and research environment. Part of our mission is to provide high quality education through the combination of theory, practice, and real-world experience to equip graduates with the necessary knowledge and skills to make them competitive in the workplace and capable of undertaking research. Our program focuses on areas beyond programming or immersive software development. The program is designed to provide you with core information technology foundation, as well as concentration courses that will equip you with the necessary technical and research skills needed in industry and academia. Our curriculum encompasses a diverse set of topics which is both academically stimulating and highly relevant to today's world in order to ensure that you are well equipped to successfully follow rewarding career paths in many diverse areas of industry and academia.

As a student in the IT department, you will benefit from high quality teaching carried by a team of our passionate academic staff with a wide range of research interests. The faculty members of the Information Technology Department have very strong academic credentials. The entire faculty in the department has doctorates and Masters Degrees from outstanding institutions and they are very active in research.

I hope you will find that the Information Technology Department offers the breadth and vision that you seek in a master's program, and you find the information in this guide useful.

Finally, I want to wish you all success with your studies here at KSU. If you have any questions, concerns or suggestions please feel free to contact me at malvahya@ksu.edu.sa.

Maha Al-Yahya, PhD

Head, Information Technology Department.

A BIT OF IT

IT IS MORE THAN EDUCATION...

The program of study for the department is intended to provide graduates that can efficiently and professionally participate in the government and private computer-based business technical sectors. Another goal of the program is to establish a solid base of future teachers in the field of information technology. The program provides a broad education in the technology of computing by offering over 20 courses that span the full range of topics in modern Information Technology. Every student is expected to be proficient in the theories of computing and be able to apply them to the processes of design and implementation of software systems, and to be a proficient user of IT in the various application areas.

WHAT IS INFORMATION TECHNOLOGY?

The Association of Computing Machinery (ACM) defines Information Technology as “an academic discipline, concerned with issues related to advocating for users and meeting their needs within an organizational and societal context through the selection, creation, application, integration and administration of computing technologies.”

Information Technology is a practical discipline; concerned with implementing solutions to practical problems using current technology. It prepares students to meet the computer technology needs of business, government, healthcare, and other kinds of organizations. Today, organizations of every kind are dependent on information technology.

Our VISION

Excel in information technology education, research and commitment to effective fulfillment of the needs of our society

Our MISSION

Provide high quality education through the combination of theory, practice, and real-world experience to equip graduates with the necessary knowledge and skills to make them competitive in the workplace and capable of undertaking research. And to create a motivating work environment to engage faculty in innovative research in ways that serve the society.

STUDY PLAN

The program offers two options, thesis and project, below are the detail plan of the two.

THESIS OPTION

First Semester		
Course Code	Course Title	Credit Hours
IT501	Advanced Topics in Networks	3
IT502	Advanced Topics in Web Technologies	3
IT5XX	Elective (1)	3
Total		9
Second Semester		
IT503	Advanced Topics in Databases	3
IT505	Research Methods	3
IT5XX	Elective (2)	3
Total		9
Third Semester		
Course Code	Course Title	Credit Hours
IT504	Selected Topics in Information Technologies	3
IT 600	Thesis – Part I	--
Total		3
Fourth Semester		
Course Code	Course Title	Credit Hours
IT5XX	Elective (3)	3
IT 600	Thesis – Part II	--
Total		3

PROJECT OPTION

First Semester		
Course Code	Course Title	Credit Hours
IT501	Advanced Topics in Networks	3
IT502	Advanced Topics in Web Technologies	3
IT5XX	Elective (1)	3
IT5XX	Elective (2)	3
Total		12
Second Semester		
IT503	Advanced Topics in Databases	3
IT505	Research Methods	3
IT5XX	Elective (3)	3
IT5XX	Elective (4)	3
Total		12
Third Semester		
Course Code	Course Title	Credit Hours
IT504	Selected Topics in Information Technologies	3
IT 5xx	Elective (5)	3
IT 596	Project I	3
Total		9

Fourth Semester		
Course Code	Course Title	Credit Hours
IT5xx	Elective (6)	3
IT5xx	Elective (7)	3
IT 597	Project 2	3
Total		9

COURSES

The program also offers diverse set of vibrant and hot topics in Information Technology discipline, divided into core courses and elective courses.

CORE COURSES

The core courses proposed for the program provide the necessary background required to sharpen the students' skills in the various fields of information technology. The program offers 5 core courses, three Credit Units each.

Course Code	Course Title	Credit Hours
IT501	Advanced Topics in Computer Networks	3
IT502	Advanced Topics in Web Technologies	3
IT503	Advanced Topics in Database	3
IT504	Selected Topics in Information Technologies	3
IT505	Research Methods	3
Total		15

Master's Thesis and Project

Course Code	Course Title	Credit Hours
IT596	Project I	3
IT597	Project 2	3
IT600	Master's Thesis	18

ELECTIVE COURSES

Course Code	Course Title	Credit Hours
IT 531	Advanced Networks Security	3
IT 532	Advanced Topics in Data Mining	3
IT 533	Ubiquitous and Pervasive Computing	3
IT 534	Grid and Cloud Computing	3
IT 535	Games Technology	3
IT 536	Bioinformatics	3
IT 537	Mobile Computing	3
IT 538	Social Web	3
IT 539	Semantic Web	3
IT 540	E-Government	3
IT 541	E-Learning System	3
IT 542	E-health Applications	3
IT 543	Usability and User Experience in Information Technology	3
IT 544	Interactive Multimedia Application	3
IT 545	E-Business	3
IT 546	Arabic Computing	3
IT 547	Open Source Technology	3
IT 548	Information Visualization	3
IT 549	IT Project Management	3

IT FACULTY MEMBERS

We at the Information Technology Department are blessed with having such strong female PhDs who are very active in research and hold Degrees from outstanding institutions.

Faculty Member Name	Faculty Member Email	Research Area
Dr. Shurug Alkhalifa	salkhalifa@ksu.edu.sa	Database and Big Data
Dr. Auhood Afaries	aalfaries@ksu.edu.sa	Semantic web and Web Technologies, Arabic Natural Language Processing, E-commerce
Dr. Lilac Alsafadi	lalsafadi@ksu.edu.sa	Image processing
Dr. Afshn Ajafri	ajafri@ksu.edu.sa	Semantic web and Web Technologies, Arabic Natural Language Processing, humanitarian computing.
Dr. Maha Al-yahya	malyahya@ksu.edu.sa	Semantic web and Web Technologies, Arabic Natural Language Processing, humanitarian computing.
Dr. Hend Akhalifa	hendk@ksu.edu.sa	Computer graphics
Dr. Nadia Al-Ghreimil	ghreimil@ksu.edu.sa	Data Mining, Text Mining, Information Technology
Dr. Muna Alrazgn	malrazgan@ksu.edu.sa	Computational Intelligence, Optimization
Dr. Heyam Al-Baity	halbaity@ksu.edu.sa	Information Technology, Bioinformatics
Dr. Isra Alturaiki	ialturaiki@ksu.edu.sa	Information Technology, Optimization
Dr. Najwa Altwaijry	ntwaijry@ksu.edu.sa	Information Technology, Security Assurance
Dr. Shada Alsalamah	saalsalamah@ksu.edu.sa	

Dr. Feryal haj	feryal@ksu.edu.sa	Information Technology, Arabic Natural Language Processing
Dr. Fatiha bousbahi	fbousbahi@ksu.edu.sa	Information Technology, E-learning
Dr. Hala mokhtar	hmokhtar@ksu.edu.sa	Information Technology , Network
Dr. Henda Ourtani	houertani@ksu.edu.sa	Information Technology, E-learning
Dr. Ghada Alhudhud	galhudhud@ksu.edu.sa	Information Technology , Software Engineering
Dr. Sahar Bayoumi Ali	sahali@ksu.edu.sa	Information Technology , Image processing
Dr. Rabia Jafri	rjafri@ksu.edu.sa	Information Technology , Human computer interaction, image processing
Dr. Souad larabi	smariesainte@ksu.edu.sa	Information Technology , Optimization, Arabic computing
Dr. Sana Ghouzali	sanaa.ghouzali@gmail.com	Information Technology , Security, Network Security
Dr. Meriam Kefi	mkefi.c@ksu.edu.sa	Optimization, Cloud computing
Dr. Khaola Hamdi	khamdi.c@ksu.edu.sa	Cloud computing , networking
Dr. Duaa Alsaeed	dalsaeed@ksu.edu.sa	Image processing
Dr. Heba Algibreen	hjbreen@ksu.edu.sa	Machine learning
Dr. Hala Alshamlan	halshamlan@ksu.edu.sa	Bioinformatics
Dr. Alaa Esmawi	aeshmawi@ksu.edu.sa	Security, data mining, semantic web and database

Research Groups

The college of Computer and Information Sciences holds many research groups under its umbrella, the following are the research groups in our college:

1. iWAN Research Group
2. IT For Islamic And Arabic Studies Research Group
3. Sound And Image Processing Research Group
4. Wireless Networks Research Group
5. Bioinformatics Research Group
6. High Performance Computing Research Group

iWAN research group is the research dimension of the IT department. iWAN aims to publish research that serves the society and contributes in building a knowledge economy, through establishing a motivating environment, perfect placement of technology, and effective local and international partnership.

ACADEMIC AFFAIRS

KSU REGISTRATION SYSTEM (EDUGATE)

During your studies at KSU, you will hear and use the word EduGate a lot. EduGate is the online registration system of KSU. This comprehensive, user-friendly system enables students to use many services such as registering and/or canceling courses, modifying, confirming and printing their schedules. It also allows students to view their grades and evaluate instructors.

You may start using the academic system by logging in using a user name (Student ID) and password (National ID by default – or your university email password). The student must confirm her registration within the first week of the semester. You can find it at:

<https://edugate.ksu.edu.sa/ksu/init>

And if you encounter any problems in logging in or using the system, please email:

support@student.ksu.edu.sa

Or call:

011 – 467 5557

ACADEMIC ADVISING

Upon your admittance into the MSc IT program, you are automatically assigned an academic advisor. The academic advisor is a faculty member who provides you with academic guidance throughout your studies in the program to ensure that you get the maximum out of your academic experience here at the IT department.

Prior to registering for courses at the beginning of each semester, make sure you consult your advisor to guarantee that you are on the right track to your goal; graduation. It is also highly recommended that you meet with her again on the 8th week of the semester to review your progress in the different courses. Obviously, your academic advisor's responsibility does not end there. If, at any time during your studies in the IT department, you have personal, academic, or future career concerns, please do not hesitate to contact your advisor.

EduGate system shows you who your advisor is. But if you still need help figuring out her identity, please contact **Ms. Nora Saleh Alfadel (nalfadel@ksu.edu.sa)** in room 37 on the 3rd floor of building 6. Or call her on:

011 – 80 52730



OVERRIDING REGISTRATION

Although registering for courses is fully automated now through EduGate site, sometimes, in certain circumstances, you will need to get an exception that the general registration regulations do not allow. In this case, you need the assistance of a departmental official to override regulations.

Obviously, this is a rare occurrence and the department has to approve of the override before it is invoked. To help you in these cases; please, contact **Ms. Nora Saleh Alfadel** in person at room 37 on the 3rd floor of building 6, or call her on:

011 – 80 52730

YOUR VOICE HEARD

IT DEPARTMENT Head

If anytime during your studies at the IT department, you would like to voice out your complaint, the office door of the head of the department is wide open throughout the academic day. Feel free to stop by at any time to make your voice heard and rest assured that whatever your concern is, it will be taken very seriously and that every possible action will be taken to resolve any issues you had. The office of the head of the department is located at room number 94 on the third floor of building 6. Or you can contact her by email at:

ITF@ksu.edu.sa

Or phone number:

011-8052219

Also, you can voice-out your opinion and discuss academic and non-academic issues through the department twitter account: [@KSU_IT](#) or [Ask.fm service](#).

DEAN OF SCIENTIFIC AND MEDICAL STUDIES

The center in which the IT department is located provides a strong student support. They have an email for student comments and complaints. They are swift in dealing with both academic and administrative problems. So, if you have a problem, especially a campus-related one, contact the dean on this email:

MSSM@ksu.edu.sa

Or call on the secretary office for the University Rector for Female Students' Affairs: **011- 8051516**.

RECTOR BRANCH OFFICE FOR FEMALE AFFAIRS

The rector of KSU has an extension of his office in the female campus to establish a direct line of communication between him and the female students and staff. If you need to communicate with the rector directly regarding academic or administrative issues, his office is located in room 36, ground floor, building 20.

STUDENTS RIGHTS PROTECTION UNIT

This unit aims to create an academic environment in favor of student rights based on legal foundations inside the university. The unit is responsible for looking into the written complaints and grievances of students concerning academic and personal dealings with faculty members. So in an unfortunate event of a faculty member or a university employee ill-treating you or inflicting an injustice on you, it is highly recommended that you immediately file a complaint at **Ms. Nawal Al-Shethri's office**. She is located in room 140 on the 3rd floor of building 6. Or call her on:

011 – 8055062

To learn more about the Student Rights Protection Unit please visit:

<http://www.ksu.edu.sa/sites/KSUArabic/Deanships/StudentsDeanships/law/Pages/default.aspx>

STUDENTS SUPPORT UNIT

This unit aims to provide the students with any psychological, social, or health guidance they need and helps them overcome the pressure they may encounter at the university. The student support unit for our college is located in room 1, ground floor, building 6.

IMPORTANT TO KNOW

GATES AND CAMPUS EXIT POLICIES

To be able to exit the campus before 12 p.m. during the semester, you will need to fill out a one-time exit form. These forms can be found at campus gates. They should be filled out with your schedule and have both the department and your guardian approved it, and then you are ready to go. In the case of an emergency that requires you leaving campus before you are done with classes, just go to Ms. **Aisha Al-Swaelem** (aalswelem@ksu.edu.sa) in room 143 on the 3rd floor of building 6 and she will be delighted to assist you. You could also call her on:

011 – 8051703

STUDENT ACTIVITY CENTER

Most student-related activities are located in the Student Activity Center – building 25 in the Center of Female campus. This three-level building houses the Student Partnership Program, a computer training laboratory; a Student Fund supported restaurant (offers nutritious reduced price meals), an auditorium, a Café, a small gym, the Photocopy Center, and student clubs hall. The building is completely covered with wireless network.

In addition, the Recreation Center has just opened at the heart of the female campus.

BANKING SERVICES

A branch of Samba bank is located on the ground floor, building 27-A. It provides complete banking services for students and staff. A Samba ATM machine is located at the entrance # 3.

WIRELESS NETWORK

Wireless networks became increasingly important in our daily lives. Therefore, the university ensured that most buildings in the Center of Scientific and Medical Studies are covered with a wireless network for the exclusive use of students and staff. So, if you have your laptop with you and wish to check your email or even browse around the IT department website, check your available wireless networks. If you find one named: **KSU-students**

Connect to it using your university email credentials, and the World Wide Web will be at your fingertips. Now, most buildings are covered, but if you cannot find the network, go to areas where students usually hang out and you will definitely find it. If you have trouble logging in or even finding the network, you could email: support@ksu.edu.sa

Or call:

011 – 80509090

DEANSHIP OF SKILLS DEVELOPMENT

If you feel that your computer skills need some sharpening, KSU offers training courses for students. They offer a variety of courses instructed by highly qualified trainers. The courses offered include Microsoft office components, Photoshop and basic computer maintenance.

<http://ksu.edu.sa/Administration/RectorDeputies/SDF/Depts/Pages/SkillsDevelopment.aspx>

DEANSHIP OF GRADUATE STUDIES

All graduate admissions are administered by the Deanship of Graduate Studies (DGS). The DGS can provide you with all the information you require on your higher studies at:

<http://ksu.edu.sa/Deanships/DeanshipofGraduateStudies/Pages/Home.aspx>

DISCOUNTED AIRFARE

The Saudi Arabian Airlines offers special discounts for KSU students. They take 50% off domestic flights coach class fare. So, whenever you feel the urge to travel and explore, make use of this discount by picking up and filing out the discount form from:

Ms. Nawal Al-Shethri at: room 140 on the 3rd floor of building 6.

Or feel free to call: **011 – 8052176**

LOCKERS

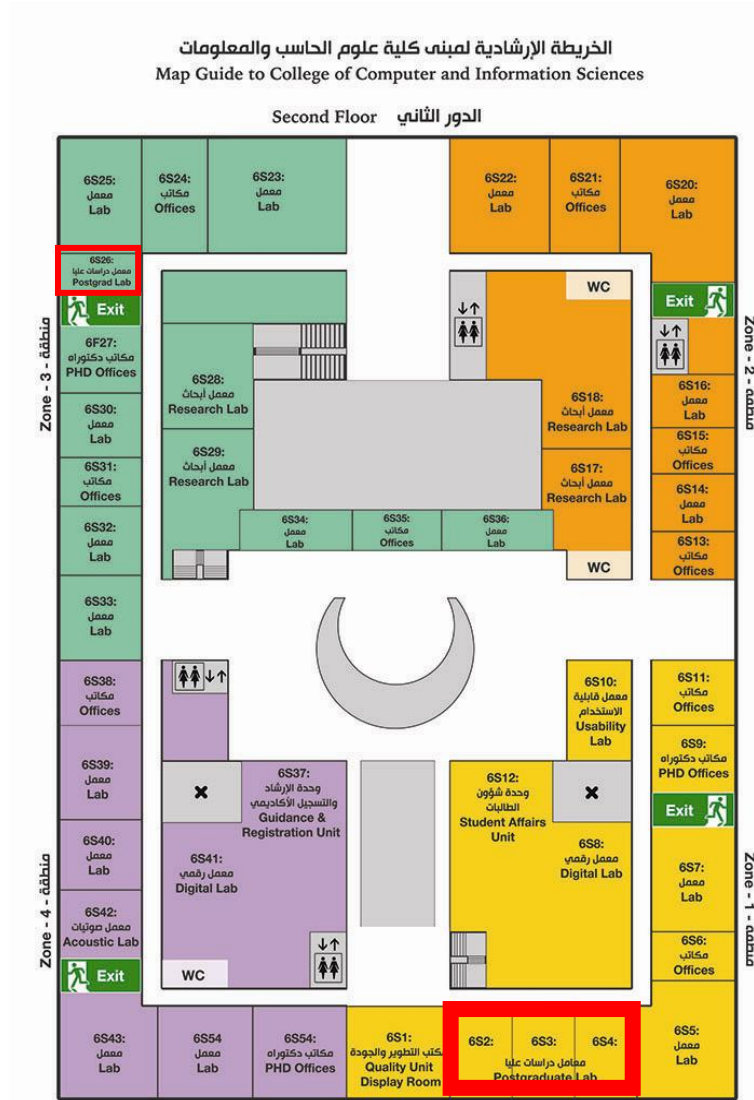
If you need a place to keep some of your heavy textbooks or personal items, the department provides lockers to rent for nominal fees. To reserve one, contact:

Ms. Nawal Al-Dikhayil in room 140 on the 3rd floor of building 6.

You could also contact her on: **011 – 8052176**

LABS

Our college offers four labs dedicated for the MSc. students; each is equipped with computers and printers. These labs are located in the second floor, rooms 2, 3, 4, and 26 in building 6. To access these labs you need to ask the IT department secretaries to request an access from the college financial unit.



TRAVEL

In case you need to travel abroad and have to arrange for travel accommodations and flights, the Center of Scientific and Medical Studies houses the top-of-the-line travel agent; Altayyar Travel and Tourism. They welcome you anytime during the academic day and are more than happy to assist you in your travel arrangements. They are located in room 2 on the ground level of the Student Activity Center (building 25).

You can also visit their website: <http://www.altayyargroup.com/>

ACADEMIC POLICES

ATTENDANCE

The IT department highly values commitment and enthusiasm in its students. Therefore, attendance of lectures and exams is very important, not just to your learning, but also to show your commitment, which is a very valuable personality trait that future employers truly appreciate. Hence, the department considers absence without a proper excuse a violation. Also, missing an exam without a proper excuse is a big offense. Now, a proper reason or excuse means that you need to fill out a form, get it signed and approved by the course instructor, get your official documentation that proves your reasons for missing the lectures or the exam, and have it approved by a departmental committee. So, as you can see it is a long process and unless you have a severe emergency, please show your commitment and attend your lectures and exams. Believe us, the gain is yours. However, if, God forbid, you had a problem, the department representative who would be more than happy to help you in compensating for missing lectures or exams is:

Ms. Nouf Al-Yahya located in room 140 on the third floor of building 6.

You can call her on: **011 – 8052176**

IMPORTANT LINKS

Information Technology Department <http://ccis.ksu.edu.sa/en/it>

College of Computer and Information Sciences <http://ccis.ksu.edu.sa/en>

Deanship of Graduate Studies: <http://dgs.ksu.edu.sa>

King Saud University <http://www.ksu.edu.sa>

Center for Scientific and Medical Studies <http://womencampus.ksu.edu.sa/en>

The design and publication of this document is by
The Department of Information Technology
Public Relations Committee
College of Computer and Information Sciences

جامعة
الملك سعود
King Saud University

